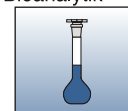
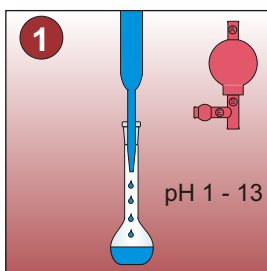


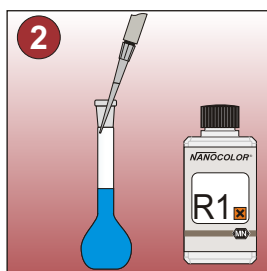
# Nickel / Níquel



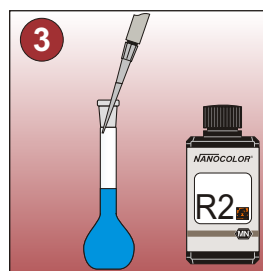
Cat. No.	Cuvette	Measurement range	Method	Wavelength
918 62	10 mm	0.1 - 10.0 mg/l Ni <sup>2+</sup>	(1) 621	436 nm
	50 mm	0.01 - 2.00 mg/l Ni <sup>2+</sup>		



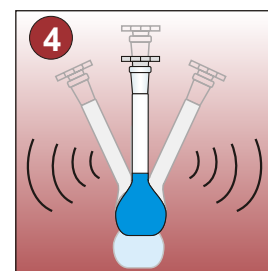
**1**  
 20 ml sample  
 échantillon  
 muestra



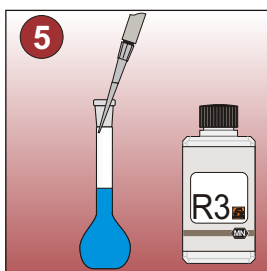
**2**  
 1.0 ml R1



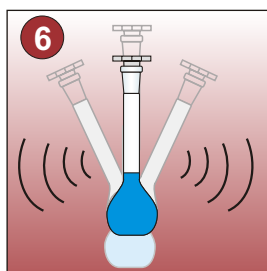
**3**  
 1.0 ml R2



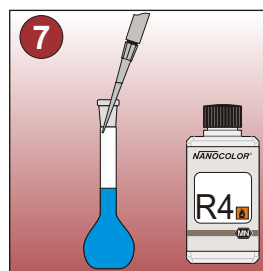
**4**  
 mix  
 mélanger  
 mezclar



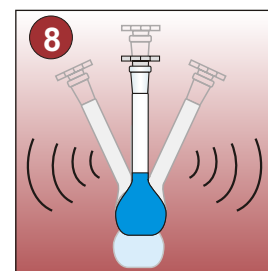
**5**  
 1.0 ml R3



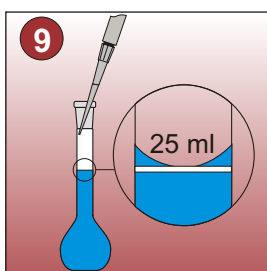
**6**  
 mix-yellow colour  
 disappear  
 mélanger-ambre couleur  
 disparaître  
 mezclar-amarillo color  
 desaparecer



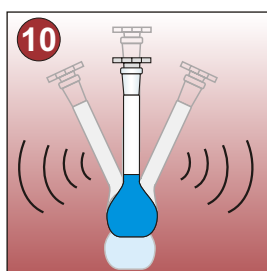
**7**  
 1.0 ml R4



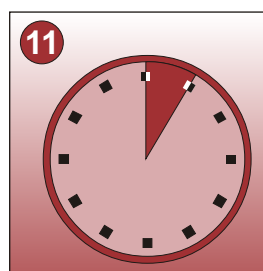
**8**  
 mix  
 mélanger  
 mezclar



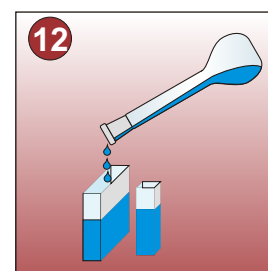
**9**  
 fill up with dist. water  
 emplir avec l'eau dist.  
 llenar con agua dest.



**10**  
 mix  
 mélanger  
 mezclar



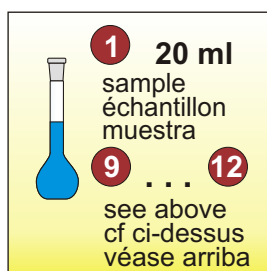
**11**  
 5'00 min



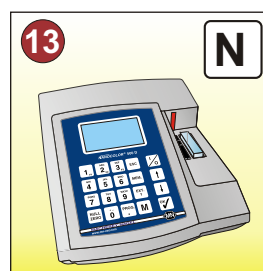
**12**  
 rinse and fill  
 rincer et emplir  
 lavar y llenar



**13** **M**  
 measurement  
 mesure  
 medición



**13** **N**  
 blank value  
 zéro  
 cero



**13** **N**  
 blank measurement  
 zéro mesure  
 cero medición