

visicolor® Powder Pillows

Sulfate

Reagent for the photometric determination of sulfate ions in surface, ground and drinking water.

Please Note: These instructions apply to products with a shelf life up to 05/2029.

Measuring range:
15–200 mg/L SO_4^{2-}

Method:

Photometric determination of sulfate ions via precipitation of bariumsulfate and measurement of the resulting turbidity.

Hazard warning:

Information regarding safety can be found on the box' label and in the safety data sheet. You can download the SDS from www.mn-net.com/SDS.

Procedure:

Requisite accessories: 2 test tubes 16 mm OD (REF 91680) or 2 test tubes 24 mm OD (REF 936101)

- 1 Rinse test tube several times with sample (*pH value of sample must be between pH 1 and 11*)

Blank (optional):

- 2 Fill one test tube with 5 mL of sample
- 3 Clean test tube
- 4 Place test tube in photometer as blank value and adjust for zero

Sample:

- 5 Place the contents of **one Powder Pillow** in a further round cell
- 6 Add 5 mL of the sample
- 7 Close test tube and shake well
- 8 Clean test tube
- 9 Wait for 10 min
- 10 Measure

Measurement:

See manual for all MACHERY-NAGEL photometers.
After use, rinse out test tubes thoroughly and seal them.

Also suitable for the determination of sulfate in seawater with appropriate dilution in the measuring range.

Interferences:

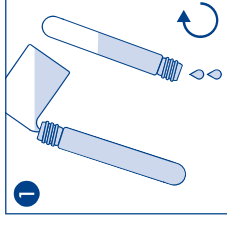
The temperature of the water sample should be between 20 °C and 30 °C.

The following quantities of ions will not interfere:

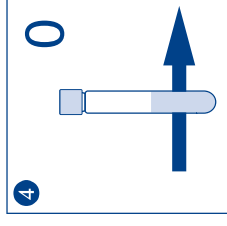
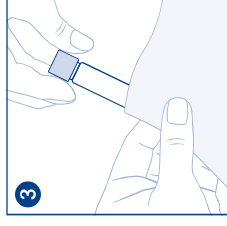
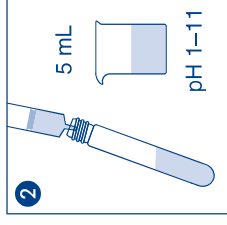
< 50 mg/L $\text{Fe}^{2+/3+}$; < 150 mg/L Zn^{2+} ; < 250 mg/L Ca^{2+} ; 500 mg/L CO_3^{2-} ; < 2000 mg/L NO_3^- ; < 2000 mg/L Cl⁻

Disposal of samples:

Information regarding disposal can be found in the safety data sheet. You can download the SDS from www.mn-net.com/SDS.



Blank (optional):



Sample:

